

# CABLE LADDER RADIO MOUNT

## CABLE LADDER RADIO MOUNT

is designed for installation of up to six radio units, filter units or other equipment on a cable ladder.

### FLEXIBILITY

Almost any kind of equipment can be installed on the mount. Accessories for mounting Ericsson/Huawei radio units and for mounting equipment on a  $\varnothing 40$  mm tube exist.

The mount fits cable ladders with various cross sections and with any width between 200-500 mm.

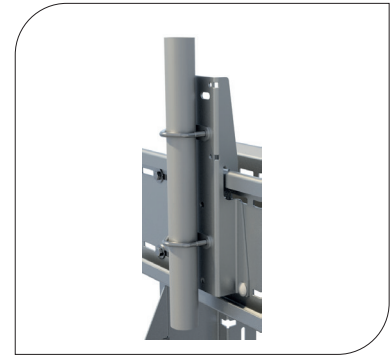
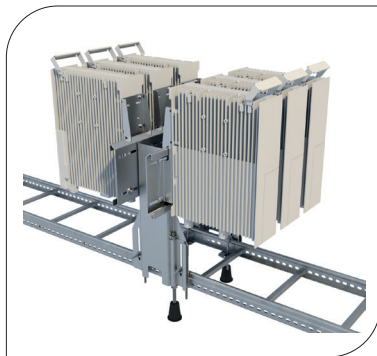
The bracket is equipped with adjustable feet to transfer point load directly to the substrate which reduces stress on the cable ladder and provides robust and stable installation.

### QUALITY

All sheet metal parts are made of Magnelis steel. All fasteners are made of acid proof stainless steel. This gives the mount excellent corrosion resistance.

### EASY ASSEMBLY

Installation is very easy thanks to the hook on design for the radio units and the cup head square neck bolts which give you a free hand when tightening the nuts.



## ORDER AND TECHNICAL INFORMATION

DRAWING NO: CD 991206

### FUNCTION DESCRIPTION:

8179 Cable Ladder Radio Mount. Basic set for installation of various equipment on a cable ladder.  
 8182 Tube Holder for mounting equipment to a  $\varnothing 40$  mm tube on Radio Adapter.  
 8183 Radio Adapter for mounting one Ericsson or one Huawei radio unit on Cable Ladder Radio Mount.

### MECHANICAL DATA:

Plates: Magnelis steel, corrosive category C5  
 Fasteners: Acid proof stainless steel

### PACKAGE DIMENSIONS:

LENGTH:	WIDTH:	HEIGHT:	WEIGHT:
580 mm (23 in)	260 mm (10 in)	110 mm (4,3 in)	14 kg (31 lb)
440 mm (17 in)	70 mm (2,8 in)	40 mm (1,6 in)	0,7 kg (1,5 lb)
310 mm (12 in)	160 mm (6,3 in)	50 mm (2,0 in)	1,4 kg (3,1 lb)

**NOTE!** RRU is not included.